

RSPO

Roundtable on Sustainable Palm Oil

ROUNDTABLE MEETING ON SUSTAINABLE PALM OIL

Experiences with RSPO NEXT



**LEARNING TO LIVE TOGETHER
FROM VISION TO TRANSFORMATION**



About DAABON

- Family Company established in 1914 (3rd gen)
- Based in northern Colombia
- Organic and Conventional products
- Vertically Integrated operations
- Banana, coffee, avocado, cocoa, cattle and ancient grains



from the soil to the market®



POIG



RSPO NEXT

- Implementing NEXT

Analyzed severity and recurrence of events (start-off y.2001) based on the available indicators for the full DAABON operations:



Low Concern	Med Concern
Use of Fire (palm)	Diversified income for workers
Development on Peat	Integration of SEIA docs
Use of Paraquat	Traceability/GIS
Deforestation at Landscape level	

RSPO NEXT

- Low Concern

Fire is not a common practice for planting/replanting or as a soil management strategy.

Peat soils/wetlands are rare and protected ecosystems.

Paraquat is not used as a biocide.

Deforestation, at landscape level is not a concern due to restrictions on ancestry of land and conservation status.

Mill Name: Extractora Tequendama				Mill Priority: LOW	
COMBINED INDICATOR	RANK		COMBINED INDICATOR	RANK	
Tree cover	● low		Protected Areas	● medium	
Primary Forest	● low		Carbon	● low	
Peat	● low		Fire	● medium	
HISTORIC LOSS: ● MEDIUM LOW RISK			POTENTIAL FOR FUTURE LOSS: ● MEDIUM LOW RISK		
Indicator	Rank	Amount	Indicator	Rank	Amount
Rate of tree cover loss	● low	1902 ha/year	Rate of tree cover loss	● low	1225 ha/year
Tree cover loss on primary forest	● low	0 ha	Area in primary forest	● low	0%
Tree cover loss on peat	● low	0 ha	Area in peat	● low	0%
Tree cover loss on protected areas	● medium	493 ha	Area in protected areas	● high	17%
Tree cover loss on carbon dense areas	● low	7405 ha	Area of high carbon density	● low	90%
Fire activity	● medium	0.00036 fires/ha/year	Rate of fire activity last two years	● medium	0.00064 fires/ha/year

Global Forest Watch Analysis Tool:
Report for permanent monitoring

RSPO NEXT



Embroidery
(Service)



Honey and
Cheese
(Product)



New Ventures
(Finance)

- Medium Concern

Using the methodology proposed for POIG (Global Living Wage Coalition) we have evidenced a decent but un-diversified income both for plantation workers and smallholders.

- Company Stability
- Low Entrepreneurship Capacity in the family.
- Lack of seed capitals
- Perception of risk is negligible

RSPO NEXT



RSPO NEXT

- Medium Concern

Expansion requires a strategic approach to territory appropriation at supply base level, linked directly to traceability.

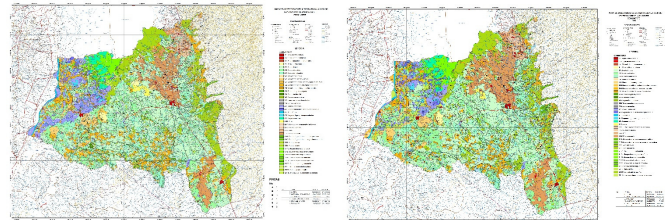
Legality of FFB

Restrictions of land use

High Conservation Value Areas

High Carbon Stocks

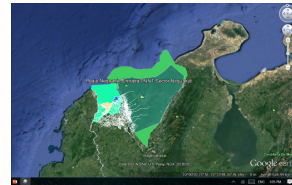
Ends up: Due Dilligence



2007

Land Cover Analysis

2014



HCV's



Felipe Guerrero
fguerrero@daabon.com.co
 Sustainability Director